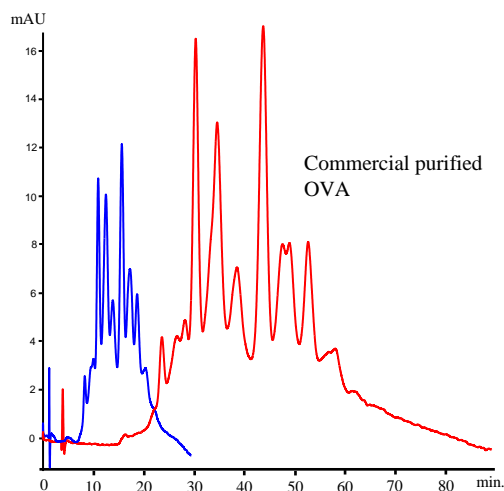


## APPLICATION NOTE

### Practical Use of STYROS™ HPA Simulated Monolith™ Polymeric In the Separation of OVA

#### Variants.

The superimposed chromatogram depicted below shows a practical rhythm of scouting for the optimal conditions of the separation on a **STYROS™ Simulated Monolith™** column as a general rule.



Chromatogram 1

Commercial OVA on **STYROS™ HPA 4.6 x 100 mm** and **4.6 x 300 mm** at 1 ml/min (360 cm/hr)

Table 1. Operating parameters.

<b>HPLC System.</b>	Agilent 1100 with thermostatted column compartment and quaternary pump.
<b>Columns</b>	<b>STYROS™ HPA/XH 4.6 X 100 mm ( 1.66ml)</b> and <b>STYROS™ HPA/XH 4.6 X 300 mm (4.98 ml)</b>
<b>Mobile phase.</b>	A: 20 mM Tris, pH=8.2 B: A + 1 M NaCl, pH= 8.2
<b>Flow rates</b>	1 ml/min (360 cm/hr of linear velocity)
<b>Gradient</b>	6 to 35 % B in 18 cv
<b>Temperature</b>	30°C
<b>Detection</b>	280 nm
<b>Injection volume</b>	30 µl and 90 µl
<b>Pressure Drop</b>	9 bar (130 psi) and 18 bar (261 psi)
<b>Sample:</b>	Commercial OVA ( sold as 98 % pure)

Such sequence allows one to quickly reach the optimal conditions of the separation and then use a longer column for added resolution.

Note that the back pressure of the 300 mm column is less than a 50 mm Monolith column with substantially higher resolving power.

Such low back pressures make these columns very appropriate for process scale pumps.

The sizes of the columns are not limited either.

Unlike Monoliths with high back pressures the Simulated Monolith™ columns can be made in all sizes including preparative columns with low back pressures.

The Simulated Monolith™ columns are ideal for Simulated Moving Bed Chromatography to generate continuous separation processes.

The high capacity of the resin allows the use of salt at the start of the gradient and an overall lower salt for the complete elution while retaining the shape of the peak. No fronting or tailing is seen.

The benefits that Simulated Monolith™ columns can bring to the process can be summed up as follows:

- Absence of leachables
- High chemical stability
- High physical stability
- Availability in different sizes
- High resolution at low and high flow rates
- Low back pressures
- Tolerant to fast changes of buffer
- High capacity
- Possibility of CIP
- Extended lifetime
- High pressure tolerance
- Availability in most chemistry
- A first step towards process scale separations

A direct comparison with of a similar size Monolith column of 4.6 x 50 mm provides a better picture.

	Simulated Monolith™	Monolith
Maximum operating pressure	3000 psi (21 MPa)	1200 psi (8.2 MPa)
Maximum operating temperature	70 °C	70 °C
Recommended flow rate	Up to 1,740 cm/hr	Up to 540 cm/hr
Maximum flow rate	1,800 cm/hr	720 cm/hr
Typical back pressure at 1ml/min	44 psi	290 psi
Solvent compatibility	All HPLC solvents	Most HPLC solvents
pH range	1-14	2-12
Capacity (BSA)	90 mg/ml	18 mg/ml
Buffer changes	No restrictions	Restricted

